

DATASHEET

S01.01.01.361_MAXWELL-12-T2M-SC_3030

Street Lighting:

IESNA Type II (Medium) beam .

50x 50 mm, 12 leds for up to 3030 size LED packages.

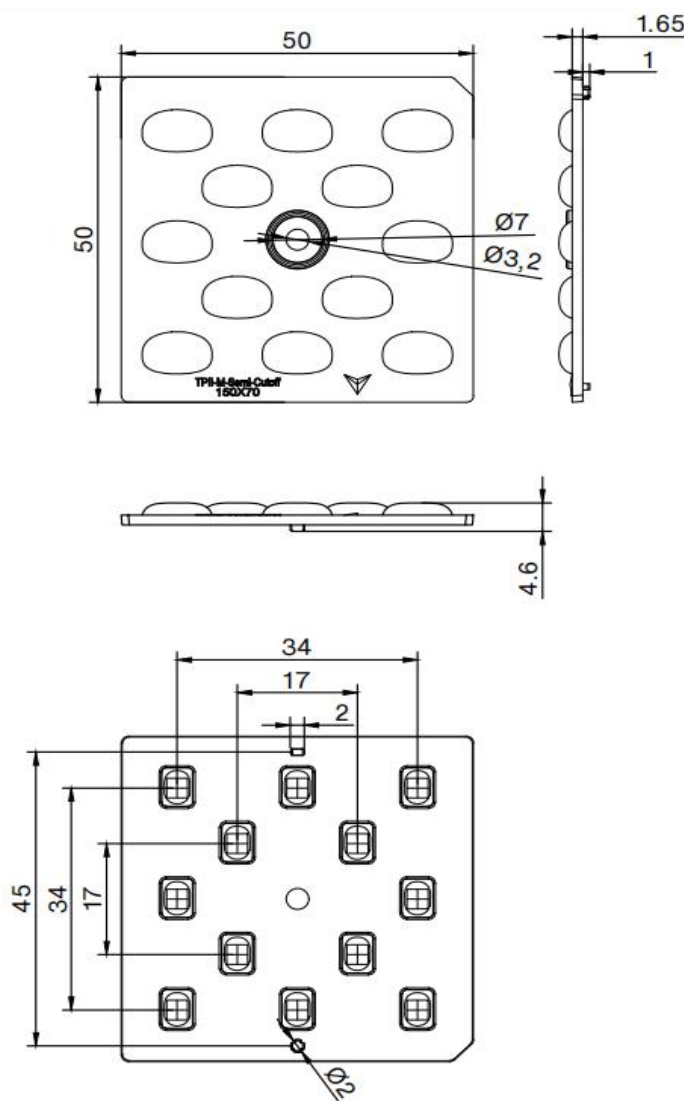
1.General Information

Lens Material	: PC
Size	: 50X50mm
typ.FWHM	: Asymmetric
Design LED	: Luxeon 3030
Compatibility	: 3030
typ.Efficiency	: 94%
Fasten	: Screw
IP class	: N/A
Zhaga	: N/A
RoHS	: YES
Color	: Clear



2.MECHANICAL SPECIFICATION

UNIT:mm



Dimensions with unmarked tolerances refer to GBT14486 tolerance table.

3. OPTICAL RESULTS

1) PHOTOMETRIC DATA(SIMULATED):



LED model Luxeon 3030 Square

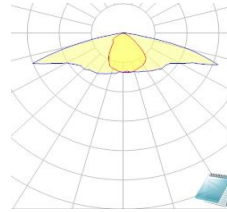
Light colour White

LEDs/each optic 1

FWHM : Asymmetric

Required components:

Glass



4.Usage and Maintenance

- 1) If necessary, clean lenses with mild soap, water and soft cloth.
- 2) Never use any commercial cleaning solvents on lenses, like alcohol.
- 3) Please handle lens with wearing gloves, skin oils may damage lens or its optical characteristic.

5.Note

Please test the data again before using. The chart data is for reference only.

The appearance and specifications of the product can be changed to improve the quality and/or performance without notice.

SUNLUMIN OPTICS CO., LTD

501D, Plant 2, No.30, Liuhu Road, Liuhu Community,
Henggang 5th, Longgang District, Shenzhen

E info@sunlumin-optics.com

www sunlumin.com www sunlumin-optics.com