

DATASHEET

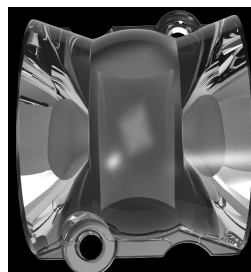
S01.01.02.369_KELLY-100X15

Architecture Lighting:

~100° x 15° oval beam. Suitable for emergency beacons, wall-washing and corridor lighting.
29 x 23 mm. For up to 3030 size LED packages.

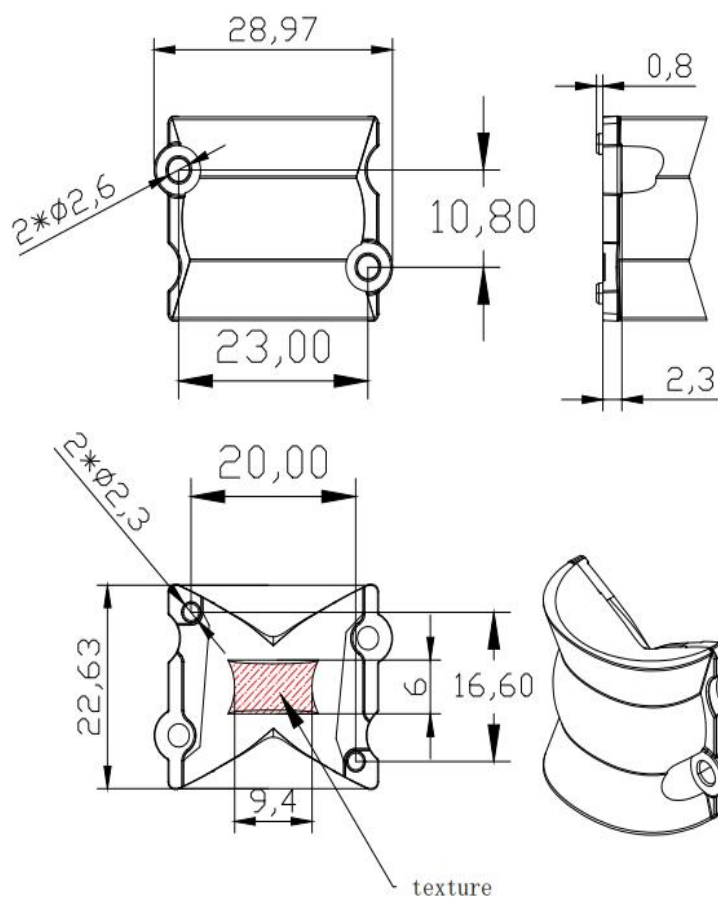
1.General Information

Lens Material	: PMMA
Size	: 29X23mm
typ.FWHM	: 100x15°
Design LED	: Osram Osconiq P3030
Compatibility	: 3030/2835
typ.Efficiency	: 97%
Fasten	: Screw
IP class	: N/A
Zhaga	: N/A
RoHS	: YES
Color	: Clear



2.MECHANICAL SPECIFICATION

UNIT:mm



Dimensions with unmarked tolerances refer to GBT14486 tolerance table.

3. OPTICAL RESULTS

1) PHOTOMETRIC DATA(MEASURED):

OSRAM

LED model Osconiq P3030

Light colour White

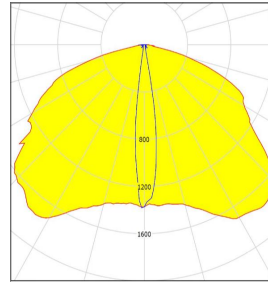
LEDs/each optic 1

FWHM : H12.4°,V137.3°

FWTM : H30.1°,V158.2°

Required components:

N/A



4.Usage and Maintenance

- 1) If necessary, clean lenses with mild soap, water and soft cloth.
- 2) Never use any commercial cleaning solvents on lenses, like alcohol.
- 3) Please handle lens with wearing gloves, skin oils may damage lens or its optical characteristic.

5.Note

Please test the data again before using. The chart data is for reference only.

The appearance and specifications of the product can be changed to improve the quality and/or performance without notice.

Last update: 2024/8/2

SUNLUMIN OPTICS CO.,LTD

2nd Floor, Building D, No.56 Liuhe Road, Tangkeng Community,
Henggang Street, Longgang District, Shenzhen

E
info@sunlumin-optics.com

www.
sunlumin-optics.com