

# DATASHEET

**S01.01.01.265\_SPORT-4-A60W**

## SPORT LIGHT LENS:

Wide forward throw beam , Cutoff.

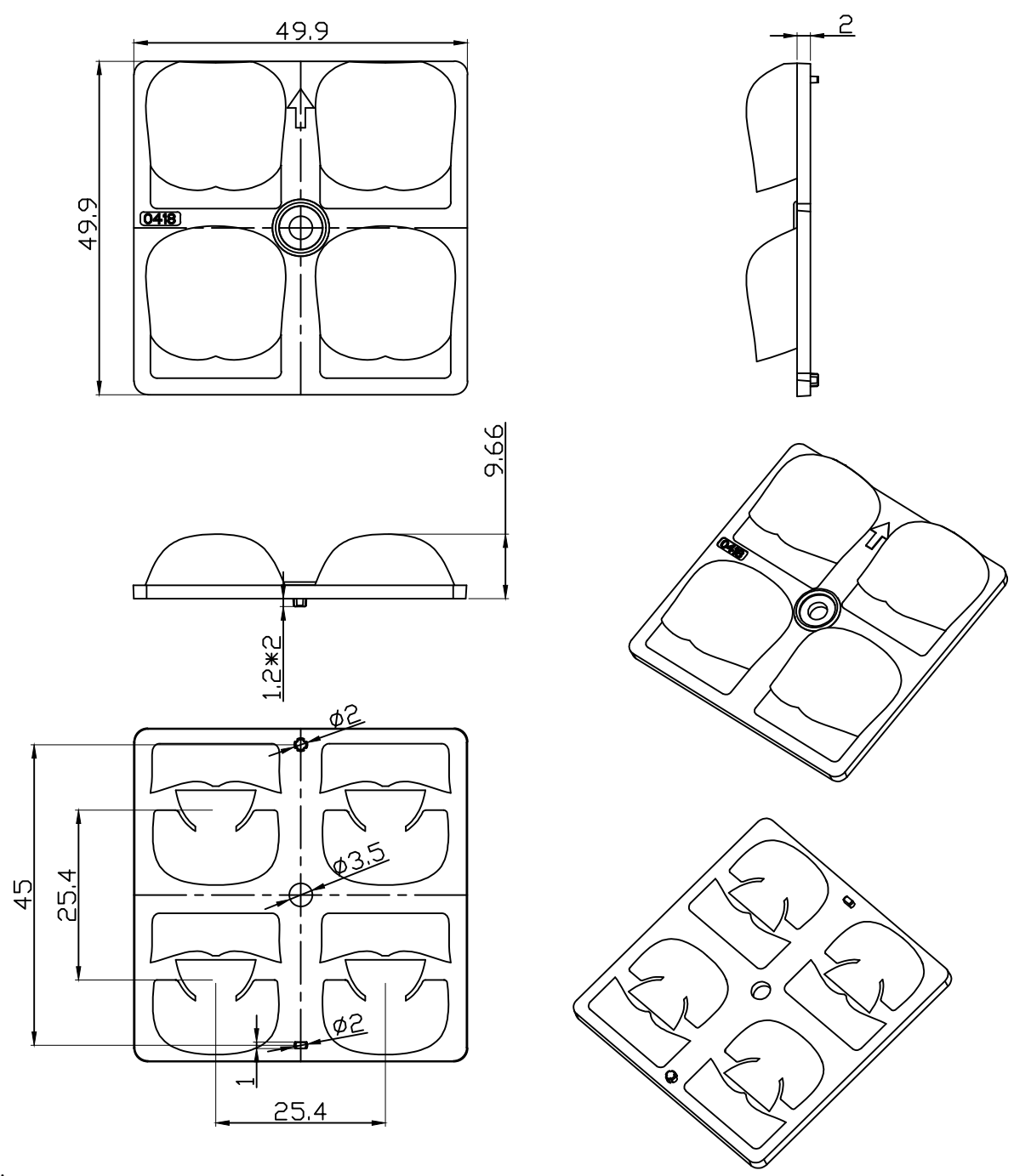
50 x 50 mm 2X2 arrays for 5050 size LED packages.

## General Information

Lens Material	: Optical PC
Size	: 50X50mm
typ.FWHM	: Asymmetric
Design LED	: LUXEON 5050 Square LES
Compatibility	: 5050/3535/3030
typ.Efficiency	: 93%
Fasten	: Screw
IP class	: N/A
Zhaga	: YES
RoHS	: YES
Color	: Clear



产品图 Product drawing	未标注公差: $\pm 0.2\text{mm}$	版本 (REV)	日期 (DATE)	变更内容CHANGE (ITEM)
		A0	2022-10-20	新建 (NEW)




技术要求:

- 1. 图中有序号尺寸需要重点控制;
- 2. 图中未标注公差的尺寸按通用公差标准执行;
- 3. 产品不得有缺胶、气泡、收缩、黑点等异常;

technical requirements:

- 1.The size of the ordered number in the figure needs to be controlled;
- 2. The dimensions not marked with tolerance in the figure shall be implemented according to the general tolerance standard;
- 3.The product shall not have lack of glue, bubbles, shrinkage, black spots and other abnormalities;

SUNLUMIN OPTICS CO., LTD

产品名称 Item name	S01.01.01.265_ MAXWELL-SL-4-T3VS	产品材质 Product material	PC
图法 View	 第三视角	设计 Designer	Yvan
比例 Share	1:1	审核 Checked	Haiqiu
单位 Unit	MM	批核 Approved	JG Wu

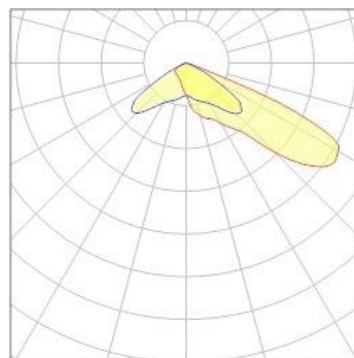
## OPTICAL RESULTS

### 1) PHOTOMETRIC DATA(MEASURED):

**TYF 同一方**

LED model	5050TH S-C5-40-81-Th
Light colour	White
LEDs/each optic	1
FWHM	Asymmetric
Peak intensity	1 cd/lm
Required components:	

**Glass**

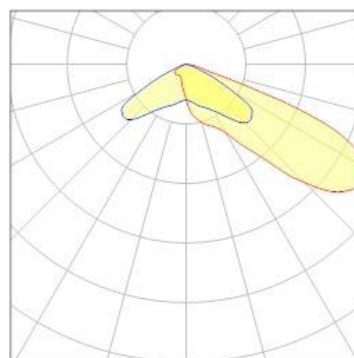


### 2) PHOTOMETRIC DATA(MEASURED):

**LUMILEDS**

LED model	LUXEON 5050 Square LES
Light colour	White
LEDs/each optic	1
FWHM	Asymmetric
Peak intensity	1 cd/lm
Required components:	

**Glass**

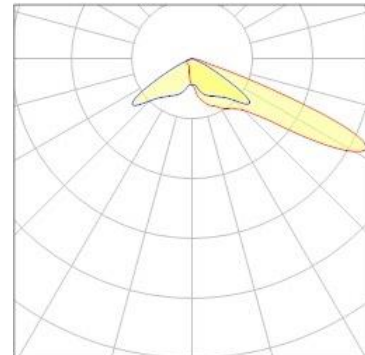


### 3) PHOTOMETRIC DATA(MEASURED):

# SAMSUNG

LED model	LH351B
Light colour	White
LEDs/each optic	1
FWHM	Asymmetric
Peak intensity	1 cd/lm
Required components:	

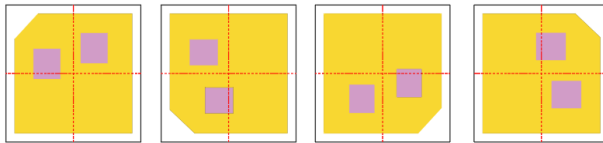
N/A



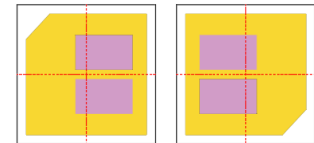
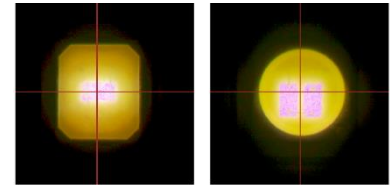
## Usage and Maintenance

1) Due to varying asymmetric chip locations, especially on mid-power LEDs, the exact source of light is not always located at the centre of the LED packet. SunLumin recommends rotating such LEDs on the PCB in a regular pattern for smoother results.

Sample layout proposal:



Example A



Example B

- 2) If necessary, clean lenses with mild soap, water and soft cloth.
- 3) Never use any commercial cleaning solvents on lenses, like alcohol.
- 4) Please handle lens with wearing gloves, skin oils may damage lens or its optical characteristic.

## Disclaimer

When gule pass through holes, columns and other structures, or part of the thin structure, will form a weld line. Please note that flow lines and weld lines on the external surfaces of the lenses are acceptable if the optical performance of the lens is within the specifications.

The typical beam angle will be changed by different color, chip size and chip position tolerance. The typical total beam angle is the full angle measured where the luminous intensity is half of the peak value. The chart data is for reference only. Please test the data again before using

The appearance and specifications of the product can be changed to improve the quality and/or performance without notice.

SunLumin assumes no liability of any kind for the possible deviation from any provided data or any other damage resulting from the usage of the provided data.

Last update: 23-Apr-25