

DATASHEET

S01.01.01.410_RUTHERFORD-192-T2M-CC_G2

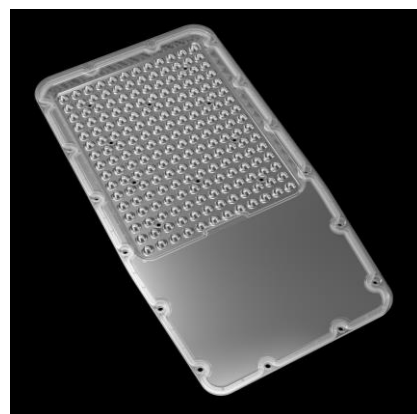
Street & Area Lighting:

IESNA TYPE II (Medium) beam.

RUTHERFORD-G2 SERIES, 355 x 185 mm, meet Brazil Inmetro certification light distribution requirement. Integrated with Ingress protected power supply chamber cover and light source chamber; IP66 with silicone gasket; Optimized for 2835 size LED packages For different wattages, has excellent waterproof ability. compitable with 3030 LED package.

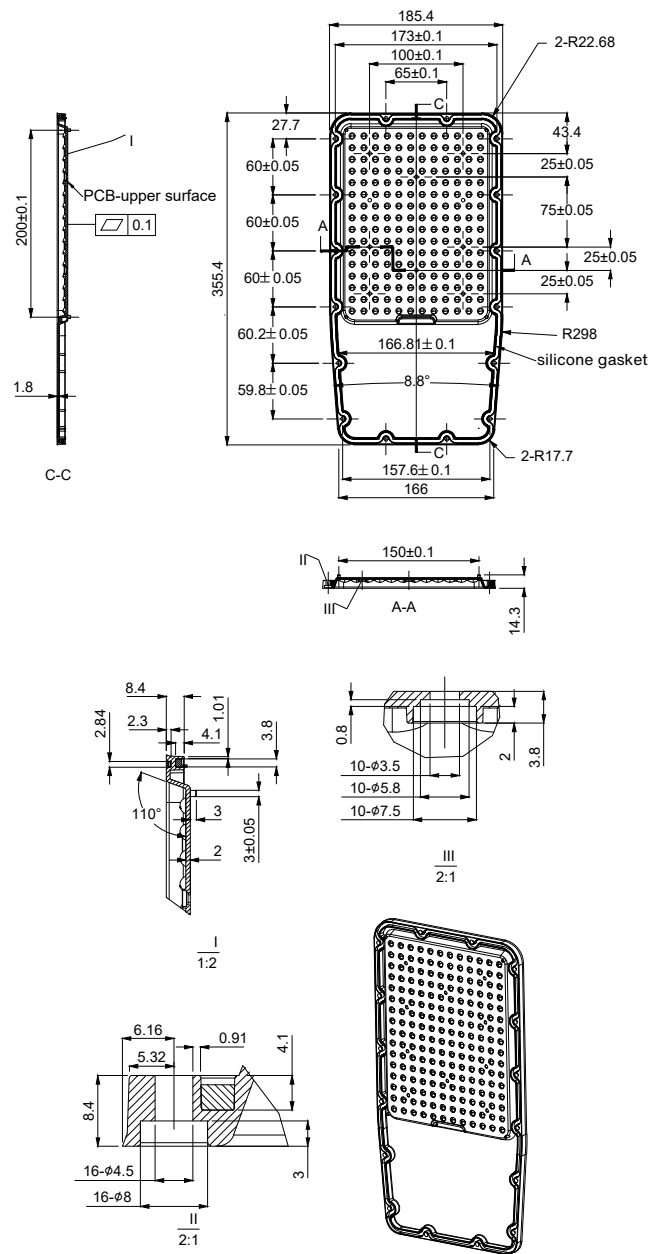
General Information

Lens Material	: Optical PC
Size	: 355x185mm
typ.FWHM	: Asymmetric
Design LED	: HONGLI 2835
Compatibility	: 3030/2835
typ.Efficiency	: 90%
Fasten	: Screw
Seal	: Silicon gasket
IP class	: IP66
Zhaga	: NO
RoHS	: YES
Color	: Clear




产品图 Product drawing

版本 REV	日期 DATE	变更内容 CHANGE (ITEM)
A0	2025-4-6	新建 NEW



- 技术要求:
- 1. 图中有序号尺寸需要重点控制;
 - 2. 产品不得有缺胶、气泡、收缩、黑点等异常;
 - 3. 未标注公差尺寸参考GB/T14486公差表
- Technical requirements:
- 1.The size of the ordered number in the figure needs to be controlled;
 - 2.The product shall not have lack of glue, bubbles, shrinkage, black spots and other abnormalities;
 - 3.Dimensions with unmarked tolerances refer to GB/T14486 tolerance table.

SUNLUMIN OPTICS CO.,LTD

产品名称 Item name	S01.01.01.410 RUTHERFORD-192-T2M-CC_G2	产品材质 Product material	PC
图法 View	 第三视角	设计 Designed	Yvan
比例 Scale	1:1	审核 Checked	Haiqiu
单位 Unit	MM	批核 Approved	JG Wu

OPTICAL RESULTS

1) PHOTOMETRIC DATA(MEASURED):



LED model Hongli 2835

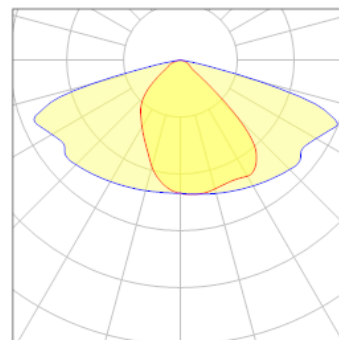
Light colour White

LEDs/each optic 1

FWHM Asymmetric

Required components:

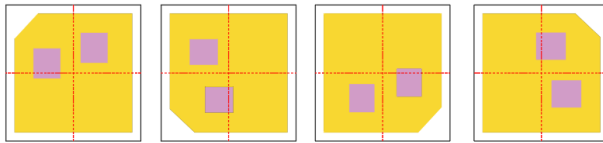
Gasket



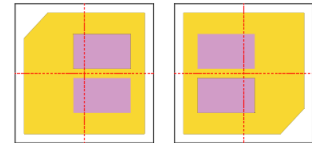
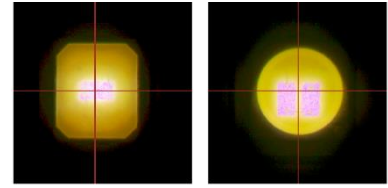
Usage and Maintenance

1) Due to varying asymmetric chip locations, especially on mid-power LEDs, the exact source of light is not always located at the centre of the LED packet. SunLumin recommends rotating such LEDs on the PCB in a regular pattern for smoother results.

Sample layout proposal:



Example A



Example B

- 2) If necessary, clean lenses with mild soap, water and soft cloth.
- 3) Never use any commercial cleaning solvents on lenses, like alcohol.
- 4) Please handle lens with wearing gloves, skin oils may damage lens or its optical characteristic.

Disclaimer

When light pass through holes, columns and other structures, or part of the thin structure, will form a weld line. Please note that flow lines and weld lines on the external surfaces of the lenses are acceptable if the optical performance of the lens is within the specifications.

The typical beam angle will be changed by different color, chip size and chip position tolerance. The typical total beam angle is the full angle measured where the luminous intensity is half of the peak value. The chart data is for reference only. Please test the data again before using.

The appearance and specifications of the product can be changed to improve the quality and/or performance without notice.

SunLumin assumes no liability of any kind for the possible deviation from any provided data or any other damage resulting from the usage of the provided data.

Last update: 26-Jun-25