

# DATASHEET

**S01.01.02.458\_MAXWELL-8-LN2\_3535**

## Street& Area Lighting:

MAXWELL-8\_3535 SERIES, 50 x 50 mm 8 lens (3+2+3) arrays optimized for 3535 size LED packages. The position of LED and the positioning column meet the EU ZHAGA standard.

Beam for EN13201 P-class and M-class requirements with high poles or where road width is less the pole height.

## General Information

Lens Material	: PMMA
Size	: 50X50mm
typ.FWHM	: Asymmetric
Design LED	: Cree XP-G3
Compatibility	: 2835/3030/3535
typ.Efficiency	: 92%
Fasten	: Screw
IP class	: N/A
Zhaga	: YES
RoHS	: YES
Color	: Clear



# 产品图 Product drawing

版本 REV

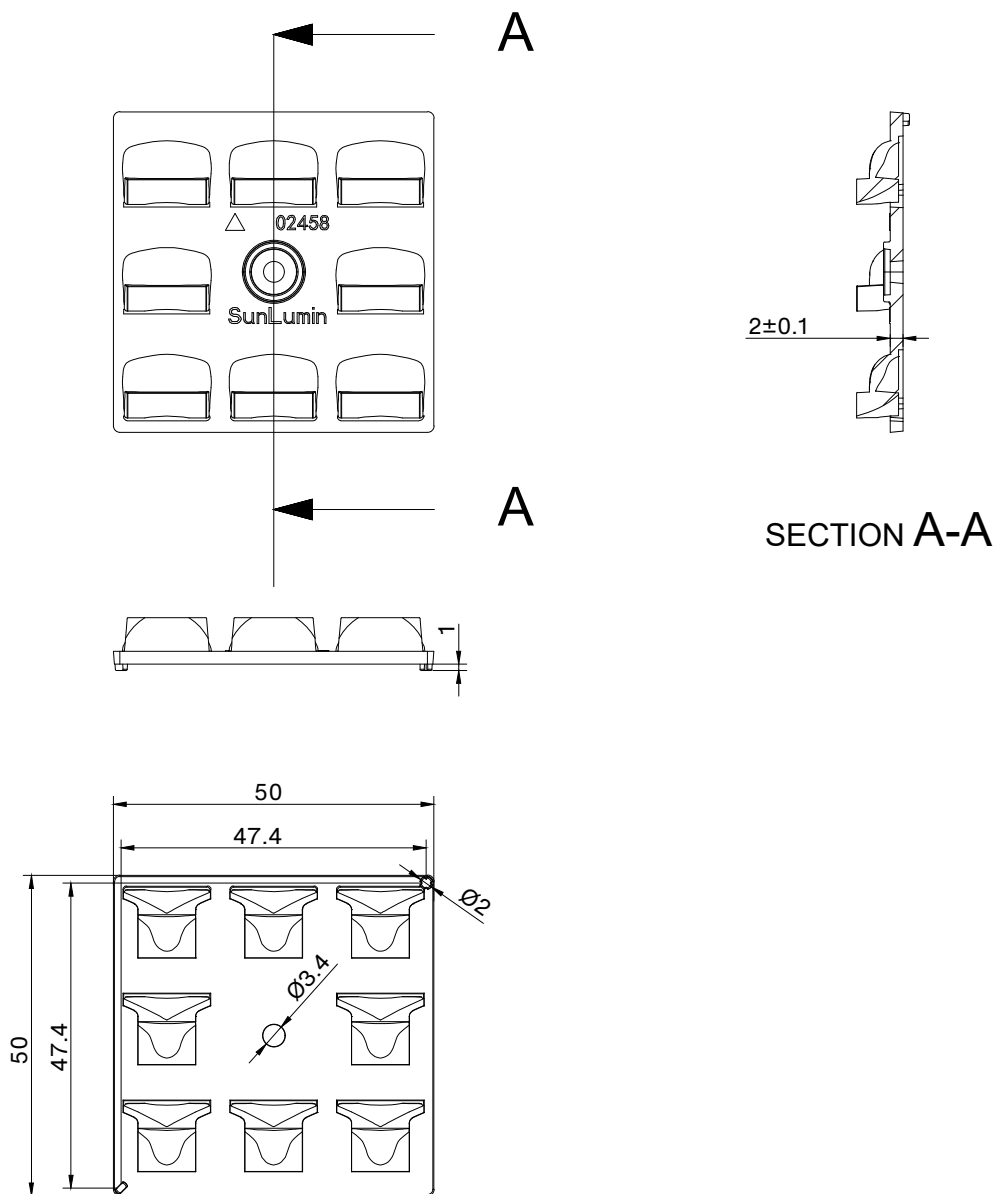
日期 DATE

变更内容 CHANGE (ITEM)

A0

2025-7-2

新建 NEW



## 技术要求:

1. 图中有序号尺寸需要重点控制;
2. 产品不得有缺胶、气泡、收缩、黑点等异常;
3. 未标注公差尺寸参考GB/T14486公差表

## Technical requirements:

1. The size of the ordered number in the figure needs to be controlled;
2. The product shall not have lack of glue, bubbles, shrinkage, black spots and other abnormalities;
3. Dimensions with unmarked tolerances refer to GB/T14486 tolerance table.

SUNLUMIN OPTICS CO.,LTD

产品名称  
Item name

S01.01.02.458\_  
MAXWELL-8-LN2\_3535

产品材质  
Product material

PMMA

图法  
View

第三视角

设计  
Designed

Hay

比例  
Scale

1:1

审核  
Checked

JG Wu

单位  
Unit

MM

批核  
Approved

JG Wu

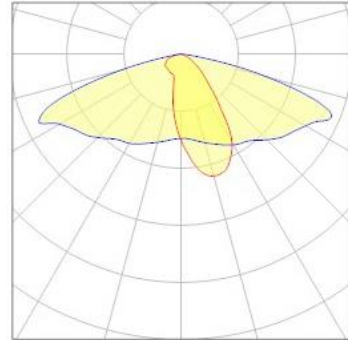
## OPTICAL RESULTS

### 1) PHOTOMETRIC DATA(MEASURED):



LED model	XP-G3
Light colour	White
LEDs/each optic	1
FWHM	Asymmetric
Required components:	

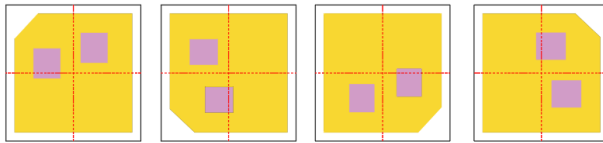
**Glass**



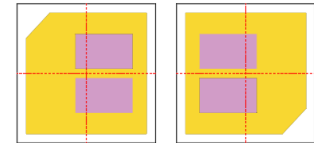
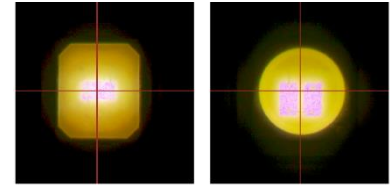
## Usage and Maintenance

1) Due to varying asymmetric chip locations, especially on mid-power LEDs, the exact source of light is not always located at the centre of the LED packet. SunLumin recommends rotating such LEDs on the PCB in a regular pattern for smoother results.

Sample layout proposal:



Example A



Example B

- 2) If necessary, clean lenses with mild soap, water and soft cloth.
- 3) Never use any commercial cleaning solvents on lenses, like alcohol.
- 4) Please handle lens with wearing gloves, skin oils may damage lens or its optical characteristic.

## Disclaimer

When gule pass through holes, columns and other structures, or part of the thin structure, will form a weld line. Please note that flow lines and weld lines on the external surfaces of the lenses are acceptable if the optical performance of the lens is within the specifications.

The typical beam angle will be changed by different color, chip size and chip position tolerance. The typical total beam angle is the full angle measured where the luminous intensity is half of the peak value. The chart data is for reference only. Please test the data again before using

The appearance and specifications of the product can be changed to improve the quality and/or performance without notice.

SunLumin assumes no liability of any kind for the possible deviation from any provided data or any other damage resulting from the usage of the provided data.

Last update: 2-Jul-25