

DATASHEET

S01.01.01.284_MAXWELL-4-15_3535

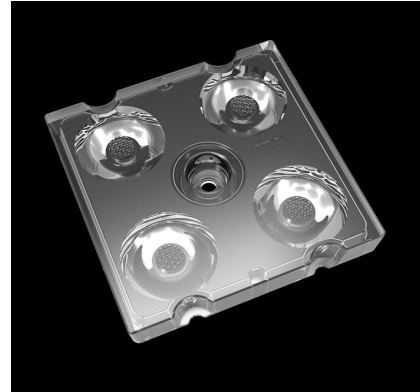
FLOOD LIGHT LENS:

~10° (ultra narrow) beam .

50 x 50 mm 2X2 arrays for 3535 size LED packages.

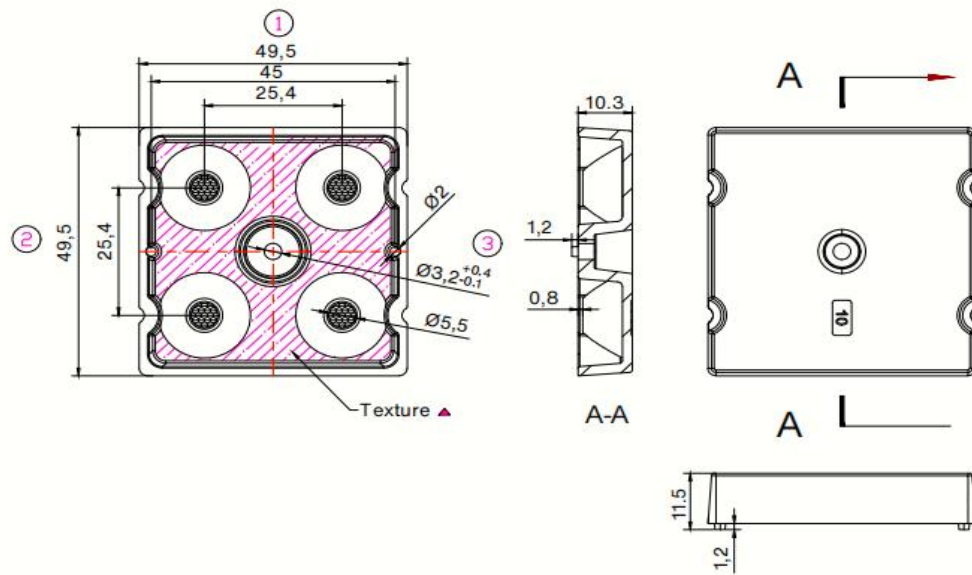
1.General Information

Lens Material	: Optical PC
Size	: 50X50mm
typ.FWHM	: 15°
Design LED	: CREE XPE
Compatibility	: 5050/3030/2835/3535
typ.Efficiency	: 91%
Fasten	: Screw
IP class	: N/A
Zhaga	: YES
RoHS	: YES
Color	: Clear



2.MECHANICAL SPECIFICATION

UNIT:mm



Dimensions with unmarked tolerances refer to GBT14486 tolerance table.

3. OPTICAL RESULTS

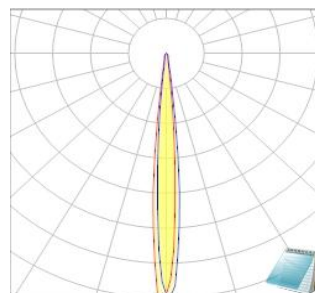
1) PHOTOMETRIC DATA(MEASURED):

1) PHOTOMETRIC DATA(MEASURED):



LED model XPE
Light colour White
LEDs/each optic 1
FWHM H9.3°,V9.4°
FWTH H16.9°,V17.3°
Required components:

Glass

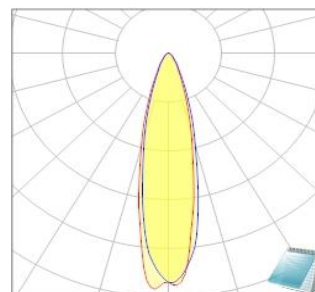


2) PHOTOMETRIC DATA(MEASURED):



LED model Luxeon5050 Square
Light colour White
LEDs/each optic 1
FWHM H24.1°,V25°
FWTH H54.1°,V54.8°
Required components:

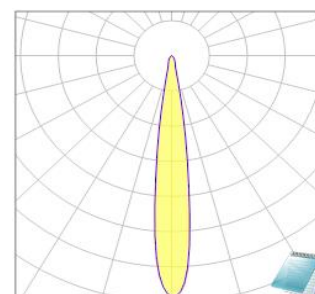
Glass



3) PHOTOMETRIC DATA(MEASURED):



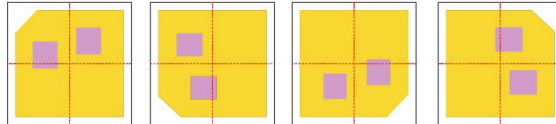
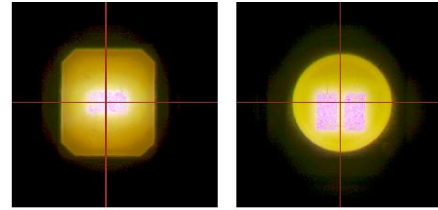
LED model LH351B
Light colour White
LEDs/each optic 1
FWHM H14.5°,V14.2°
FWTH H26°,V26.4°
Required components:



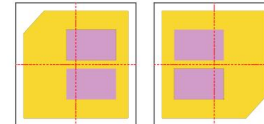
4.Usage and Maintenance

1)Due to varying asymmetric chip locations, especially on mid-power LEDs, the exact source of light is not always located at the centre of the LED packet. SunLumin recommends rotating such LEDs on the PCB in a regular pattern for smoother results.

Sample layout proposal:



Example A



Example B

- 2) If necessary, clean lenses with mild soap, water and soft cloth.
- 3) Never use any commercial cleaning solvents on lenses, like alcohol.
- 4) Please handle lens with wearing gloves, skin oils may damage lens or its optical characteristic.

5.Disclaimer

When gule pass through holes, columns and other structures, or part of the thin structure, will form a weld line. Please note that flow lines and weld lines on the external surfaces of the lenses are acceptable if the optical performance of the lens is within the specifications.

The typical beam angle will be changed by different color, chip size and chip position tolerance. The typical total beam angle is the full angle measured where the luminous intensity is half of the peak value. The chart data is for reference only. Please test the data again before using.

The appearance and specifications of the product can be changed to improve the quality and/or performance without notice.

SunLumin assumes no liability of any kind for the possible deviation from any provided data or any other damage resulting from the usage of the provided data.

Last update: 12-Oct-24