

DATASHEET

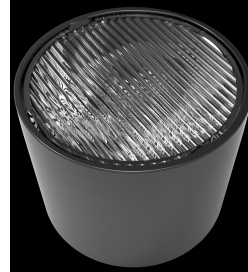
S01.01.02.422_HILBERT -15x45_G2_5050

Architecture Lighting:

~15x45° oval beam with holder.

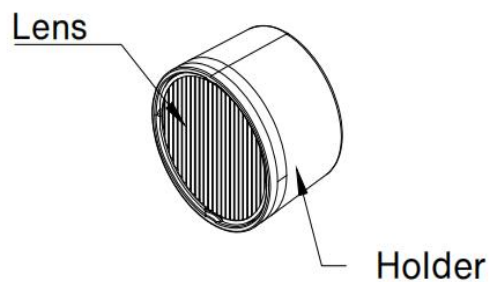
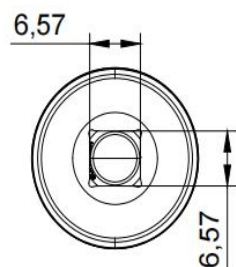
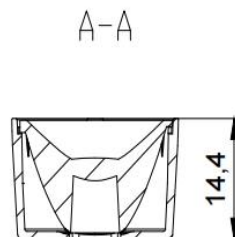
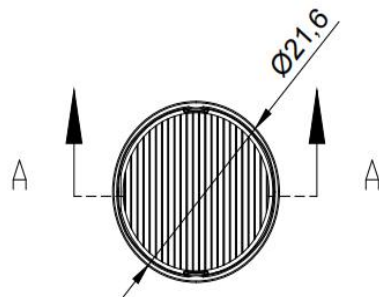
1.General Information

Lens Material	: PMMA
Holder Material	: PC
Size	: Ø 22MM
typ.FWHM	: 15x45°
Design LED	: CREE XPG3
Compatibility	: 5050/3535/3030/2835
typ.Efficiency	: 75%
Fasten	: Tape
IP class	: N/A
Zhaga	: N/A
RoHS	: YES
Color	: Clear



2.MECHANICAL SPECIFICATION

UNIT:mm



Dimensions with unmarked tolerances refer to GBT14486 tolerance table.

3. OPTICAL RESULTS

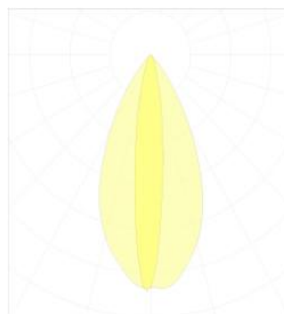
1) PHOTOMETRIC DATA(MEASURED):



LED model CREE XPG3
Light colour White
LEDs/each optic 1
FWHM H50.3°,V14.9°
FWTM H81.1°,V37.4°

Required components:

N/A



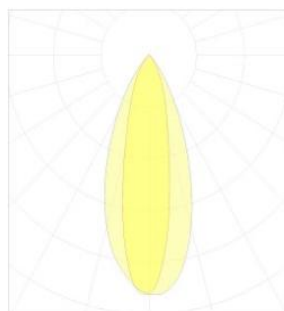
2) PHOTOMETRIC DATA(MEASURED):



LED model Luxeon 5050 HE
Light colour White
LEDs/each optic 1
FWHM H44.1°,V24.4°
FWTM H78.1°,V61.4°

Required components:

N/A



4.Usage and Maintenance

- 1) If necessary, clean lenses with mild soap, water and soft cloth.
- 2) Never use any commercial cleaning solvents on lenses, like alcohol.
- 3) Please handle lens with wearing gloves, skin oils may damage lens or its optical characteristic.

5.Note

Please test the data again before using. The chart data is for reference only.

The appearance and specifications of the product can be changed to improve the quality and/or performance without notice.

Last update: 2025-2-24

SUNLUMIN OPTICS CO.,LTD

2nd Floor, Building D, No.56 Liuhe Road, Tangkeng Community,
Henggang Street, Longgang District, Shenzhen

E
info@sunlumin-optics.com

www.
sunlumin-optics.com