

DATASHEET

S01.01.02.275_THOMSON-3-60

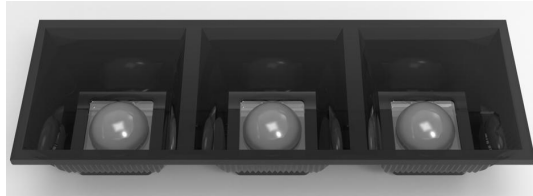
Linear Light LENS:

60° (wide) beam. UGR = 18

120 x 40mm 3pcs Led Array As Horizontal for 2835 size LED packages.

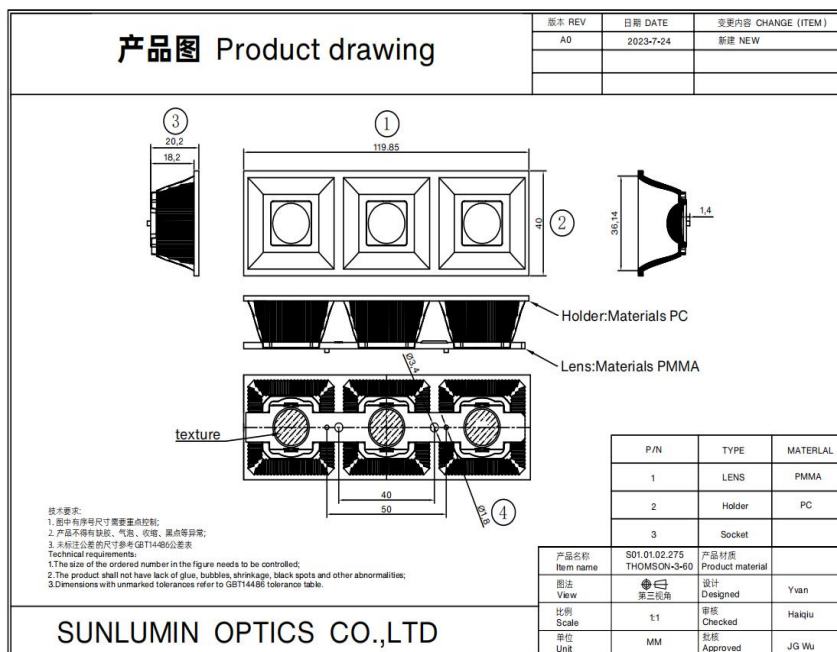
1.General Information

Lens material	: PMMA (clear)
Holder material	: PC (black)
Size	: 120X40mm
typ.FWHM	: 60°
Design LED	: LUXEON 2835
Compatibility	: 2835*4/2835/3030/3535/5050/7070
typ.Efficiency	: 83%
Fasten	: Clips+Screw
IP class	: N/A
Zhaga	: NO
RoHS	: YES
Color	: Clear+Black



2.MECHANICAL SPECIFICATION

UNIT:mm



Dimensions with unmarked tolerances refer to GB/T14486 tolerance table.

3. OPTICAL RESULTS

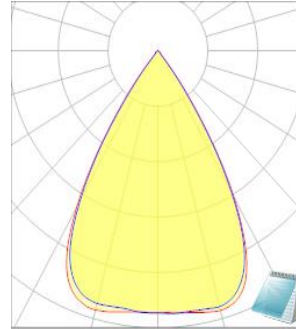
1) PHOTOMETRIC DATA(SIMULATED):



LED model	2835
Light colour	White
LEDs/each optic	4
FWHM	H57.7°,V64.9°
FWTM	H75°,V79.8°

Required components:

N/A



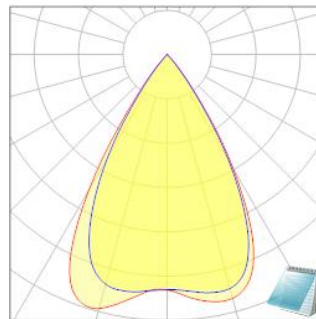
2) PHOTOMETRIC DATA(MEASURED):



LED model	RF 2835
Light colour	White
LEDs/each optic	4
FWHM	H53.8°,V61.3°
FWTM	H71.7°,V78.2°

Required components:

N/A



4.Usage and Maintenance

- 1) If necessary, clean lenses with mild soap, water and soft cloth.
- 2) Never use any commercial cleaning solvents on lenses, like alcohol.
- 3) Please handle lens with wearing gloves, skin oils may damage lens or its optical characteristic.

5.Note

Please test the data again before using. The chart data is for reference only.

The appearance and specifications of the product can be changed to improve the quality and/or performance without notice.

SUNLUMIN OPTICS CO., LTD

501D, Plant 2, No.30, Liuhe Road, Liuyue Community,
Henggang Str, Longgang District, Shenzhen

E
info@sunlumin-optics.com

www.
sunlumin.com www.
sunlumin-optics.com