

# DATASHEET

**S01.01.01.071\_UFO-FC-D226-C25**

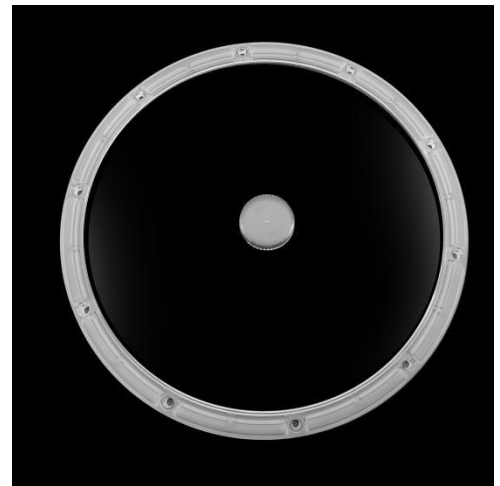
## UFO LIGHT LENS:

Flat cover seal with silicon gasket.

Ø226 mm round UFO flat cover with free arrangement of LEDs. With Confined Space (Ø25 mm) in the middle for sensor. Up to 3030 size LED package.

## General Information

Lens Material	: PC
Size	: Ø226 mm
typ.FWHM	: Flat cover
Design LED	: N/A
Compatibility	: 3030/2835
typ.Efficiency	: 94%
Fasten	: Screw
IP class	: IP66
Seal	: Silicon gasket
Zhaga	: N/A
RoHS	: YES
Color	: Clear



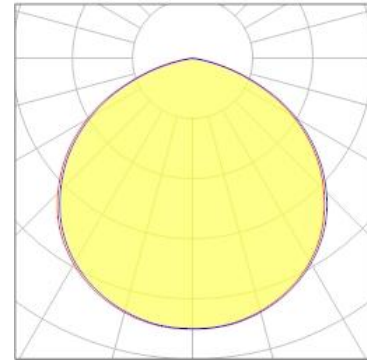
## OPTICAL RESULTS

### 1) PHOTOMETRIC DATA(MEASURED):

**TYF 同一方**

LED model TYF 3030 SQUUARE  
Light colour White  
LEDs/each optic 1  
FWHM H113.7°,V113.8°  
FWTM H152°,V153.3°  
Required components:

N/A

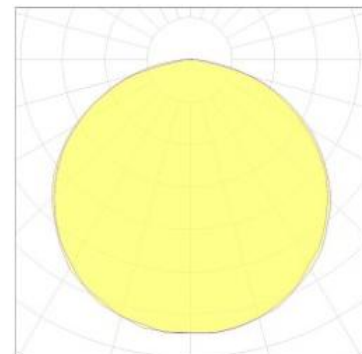


### 2) PHOTOMETRIC DATA(SIMULATION):

**LUMILEDS**

LED model LUXEON 3030 HE  
Light colour White  
LEDs/each optic 1  
FWHM H118.3°,V118.7°  
FWTM  
Required components:

N/A

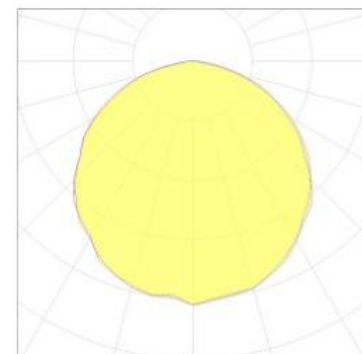


### 3) PHOTOMETRIC DATA(SIMULATION):

**LUMILEDS**

LED model LUXEON 2835E  
Light colour White  
LEDs/each optic 1  
FWHM  
FWTM  
Required components:

N/A



# 产品图 Product drawing

版本 REV

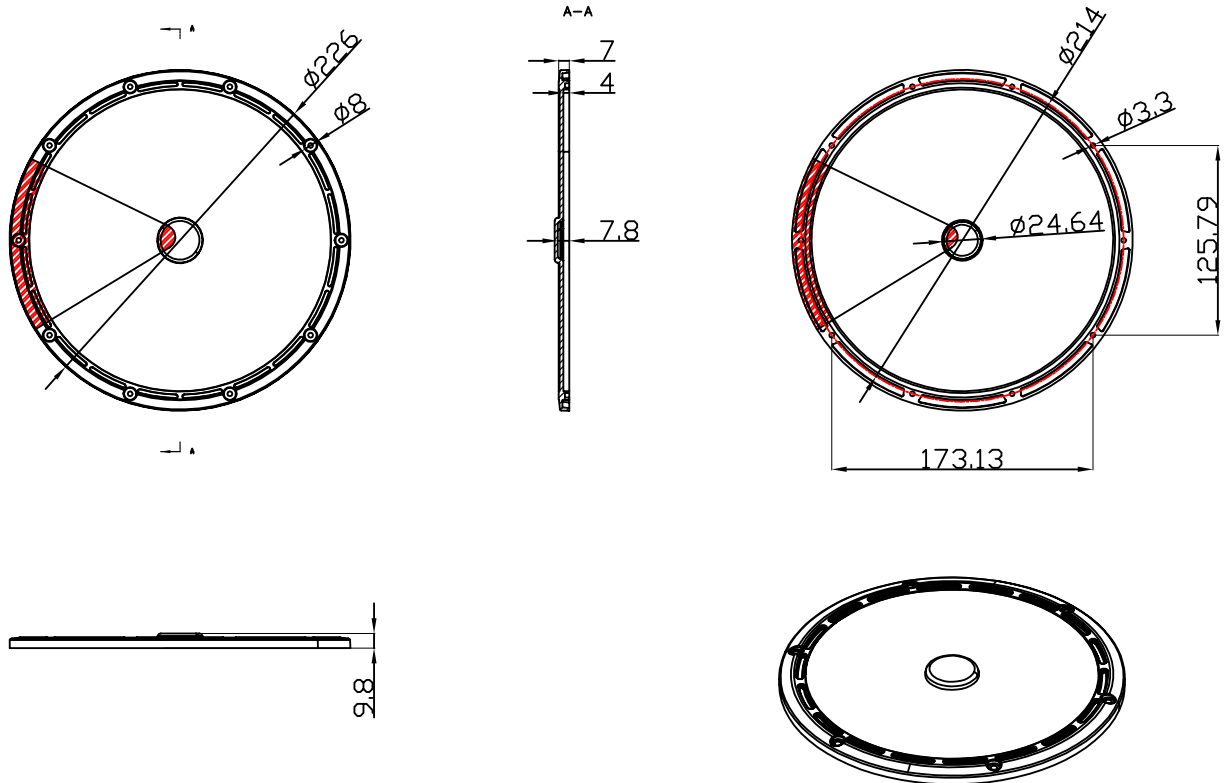
日期 DATE

变更内容 CHANGE (ITEM)

A0

2023-11-25

新建 NEW



## 技术要求:


1. 图中有序号尺寸需要重点控制;
2. 产品不得有缺胶、气泡、收缩、黑点等异常;
3. 塑料成型的公差一般按照 GB/T14486 标准, 除非图纸另有说明。

硅橡胶成型的公差一般按照 ISO 3302-1 中的 M3 级, 除非图纸另有说明。

## Technical requirements:

- 1.The size of the ordered number in the figure needs to be controlled;
- 2.The product shall not have lack of glue, bubbles, shrinkage, black spots and other abnormalities;
- 3.Plastic moulding general tolerances according to GB/T14486 and applies

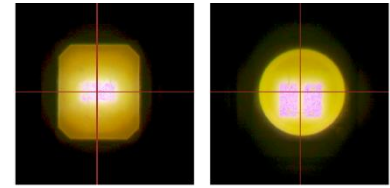
if not otherwise shown in the drawing.Silicone moulding general tolerances according to ISO 3302-1 Class M3 and applies if not otherwise shown in the drawing.

产品名称 Item name	S01.01.01.071_UFO-FC-D226-C25	产品材质 Product material	PC
图法 View	 第三视角	设计 Designed	Yvan
比例 Scale	1:1	审核 Checked	Haiqiu
单位 Unit	MM	批核 Approved	JG Wu

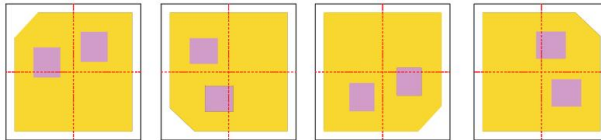
**SUNLUMIN OPTICS CO.,LTD**

## Usage and Maintenance

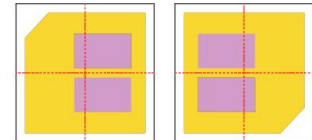
1) Due to varying asymmetric chip locations, especially on mid-power LEDs, the exact source of light is not always located at the centre of the LED packet. SunLumin recommends rotating such LEDs on the PCB in a regular pattern for smoother results.



Sample layout proposal:



Example A



Example B

- 2) If necessary, clean lenses with mild soap, water and soft cloth.
- 3) Never use any commercial cleaning solvents on lenses, like alcohol.
- 4) Please handle lens with wearing gloves, skin oils may damage lens or its optical characteristic.

## Disclaimer

When gule pass through holes, columns and other structures, or part of the thin structure, will form a weld line. Please note that flow lines and weld lines on the external surfaces of the lenses are acceptable if the optical performance of the lens is within the specifications.

The typical beam angle will be changed by different color, chip size and chip position tolerance.

The typical total beam angle is the full angle measured where the luminous intensity is half of the peak value. The chart data is for reference only. Please test the data again before using.

The appearance and specifications of the product can be changed to improve the quality and/or performance without notice.

SunLumin assumes no liability of any kind for the possible deviation from any provided data or any other damage resulting from the usage of the provided data.

Last update: 10-Dec-25