

DATASHEET

S01.01.02.487_AMBER-8-T4

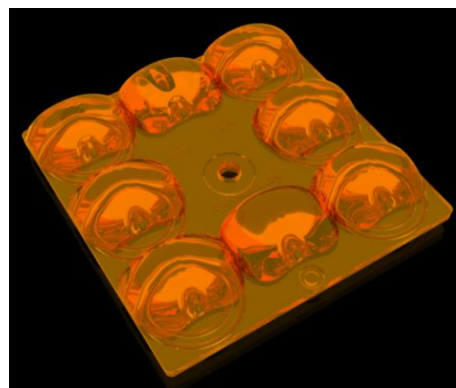
Street & Area Lighting:

Wide IESNA Type IV forward-throw beam for wide area lighting like car parks. Fulfilling EN 13201 C-class requirements.

50 x 50 mm 8 lens (3+2+3) arrays for up to flat 5050 size LED packages. The position of LED meet the EU ZHAGA standard. amber color material eliminate blue light.

General Information

Lens Material	: PMMA
Size	: 50X50mm
Typ.FWHM	: Asymmetric
Design LED	: Cree JX5050 4000K
Compatibility	: 3030/2835/3535/5050
Typ.Efficiency	: 61%
Fasten	: Screw
IP class	: N/A
Zhaga	: YES
RoHS	: YES
Color	: Amber



产品图 Product drawing

版本 REV

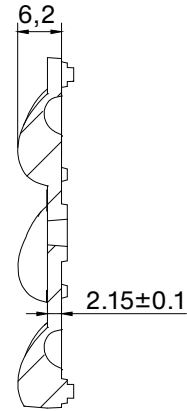
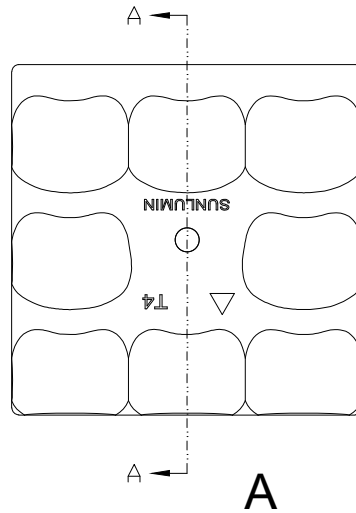
日期 DATE

变更内容 CHANGE (ITEM)

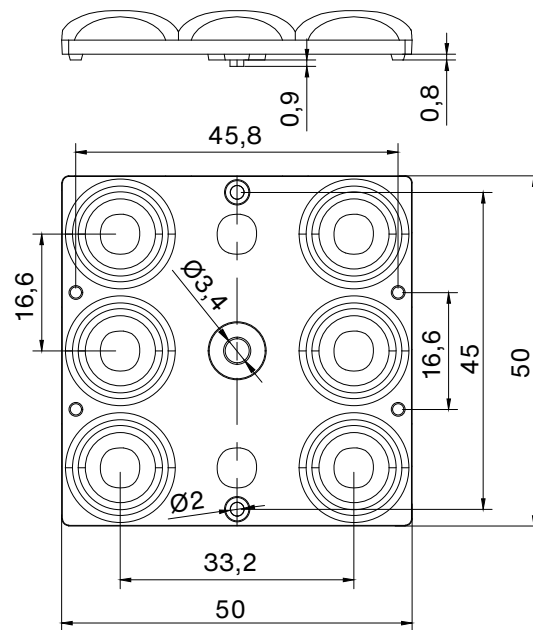
A0

2025-11-25

新建 NEW



SECTION A-A



技术要求:

1. 图中有序号尺寸需要重点控制;
2. 产品不得有缺胶、气泡、收缩、黑点等异常;
3. 未标注公差尺寸参考GB/T14486公差表

Technical requirements:

- 1.The size of the ordered number in the figure needs to be controlled;
- 2.The product shall not have lack of glue, bubbles, shrinkage, black spots and other abnormalities;
- 3.Dimensions with unmarked tolerances refer to GB/T14486 tolerance table.

SUNLUMIN OPTICS CO.,LTD

产品名称
Item name

S01.01.02.487-
AMBER-8-T4

产品材质
Product material

PMMA

图法
View

第三视角
Third Angle

设计
Designer

Yvan

比例
Share

1:1

审核
Checked

Haiqiu

单位
Unit

MM

批核
Approved

JG Wu

OPTICAL RESULTS

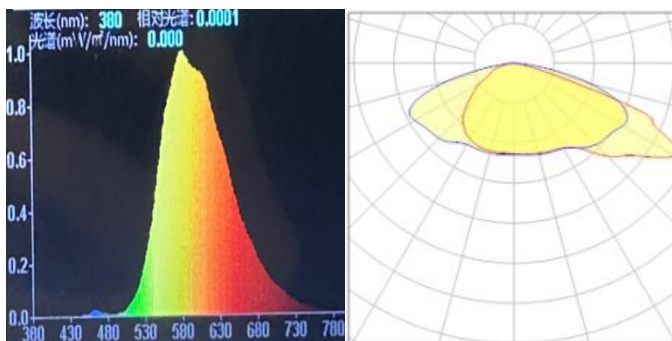
1) PHOTOMETRIC DATA(MEASURED):



LED model	LUXEON 5050 Square LES 6V
Light colour	White
LEDs/each optic	1
FWHM	Asymmetric
Amount of blue light(380-500nm)	0.6%
CCT(LED/with lens)	5126K/2350K

Required components:

Glass



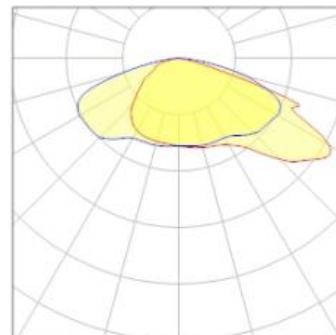
2) PHOTOMETRIC DATA(MEASURED):



LED model	GW_P9LR35em
Light colour	White
LEDs/each optic	1
FWHM	Asymmetric

Required components:

Glass



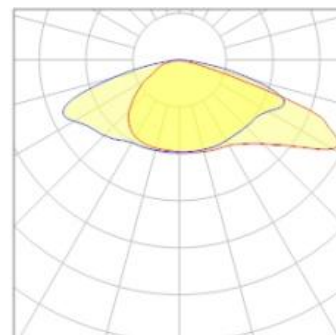
3) PHOTOMETRIC DATA(MEASURED):



LED model	JR 5050 Round
Light colour	White
LEDs/each optic	1
FWHM	Asymmetric

Required components:

Glass



SUNLUMIN OPTICS CO.,LTD

address:
Shenzhen, Guangdong Province, China

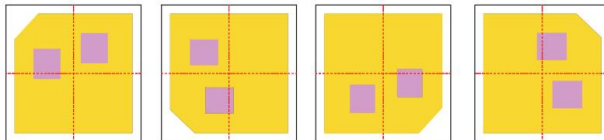
E
info@sunlumin-optics.com

www.
sunlumin-optics.com

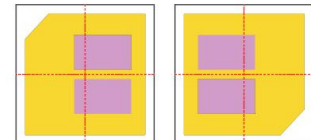
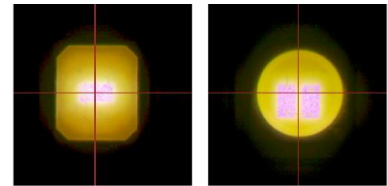
Usage and Maintenance

1) Due to varying asymmetric chip locations, especially on mid-power LEDs, the exact source of light is not always located at the centre of the LED packet. SunLumin recommends rotating such LEDs on the PCB in a regular pattern for smoother results.

Sample layout proposal:



Example A



Example B

- 2) If necessary, clean lenses with mild soap, water and soft cloth.
- 3) Never use any commercial cleaning solvents on lenses, like alcohol.
- 4) Please handle lens with wearing gloves, skin oils may damage lens or its optical characteristic.

Disclaimer

When gule pass through holes, columns and other structures, or part of the thin structure, will form a weld line. Please note that flow lines and weld lines on the external surfaces of the lenses are acceptable if the optical performance of the lens is within the specifications.

The typical beam angle will be changed by different color, chip size and chip position tolerance. The typical total beam angle is the full angle measured where the luminous intensity is half of the peak value. The chart data is for reference only. Please test the data again before using.

The appearance and specifications of the product can be changed to improve the quality and/or performance without notice.

SunLumin assumes no liability of any kind for the possible deviation from any provided data or any other damage resulting from the usage of the provided data.

Last update: 9-Jan-26

SUNLUMIN OPTICS CO.,LTD

address:
Shenzhen, Guangdong Province, China

E
info@sunlumin-optics.com

www.
sunlumin-optics.com